



Quick Start Guide

A quick way to get started with Visio P&ID Process Designer 2016.2

Pre-installation Checklist

Before installing Visio P&ID Process Designer (**VPID**) in your system ensure that you have:

- ✓ Installed Microsoft® Visio Professional and opened it at least once, you can find the trial version [here](#).
- ✓ Acquired appropriate admin access rights for your system
- ✓ Turned off all active Microsoft® Office applications
- ✓ Turned off Anti-virus

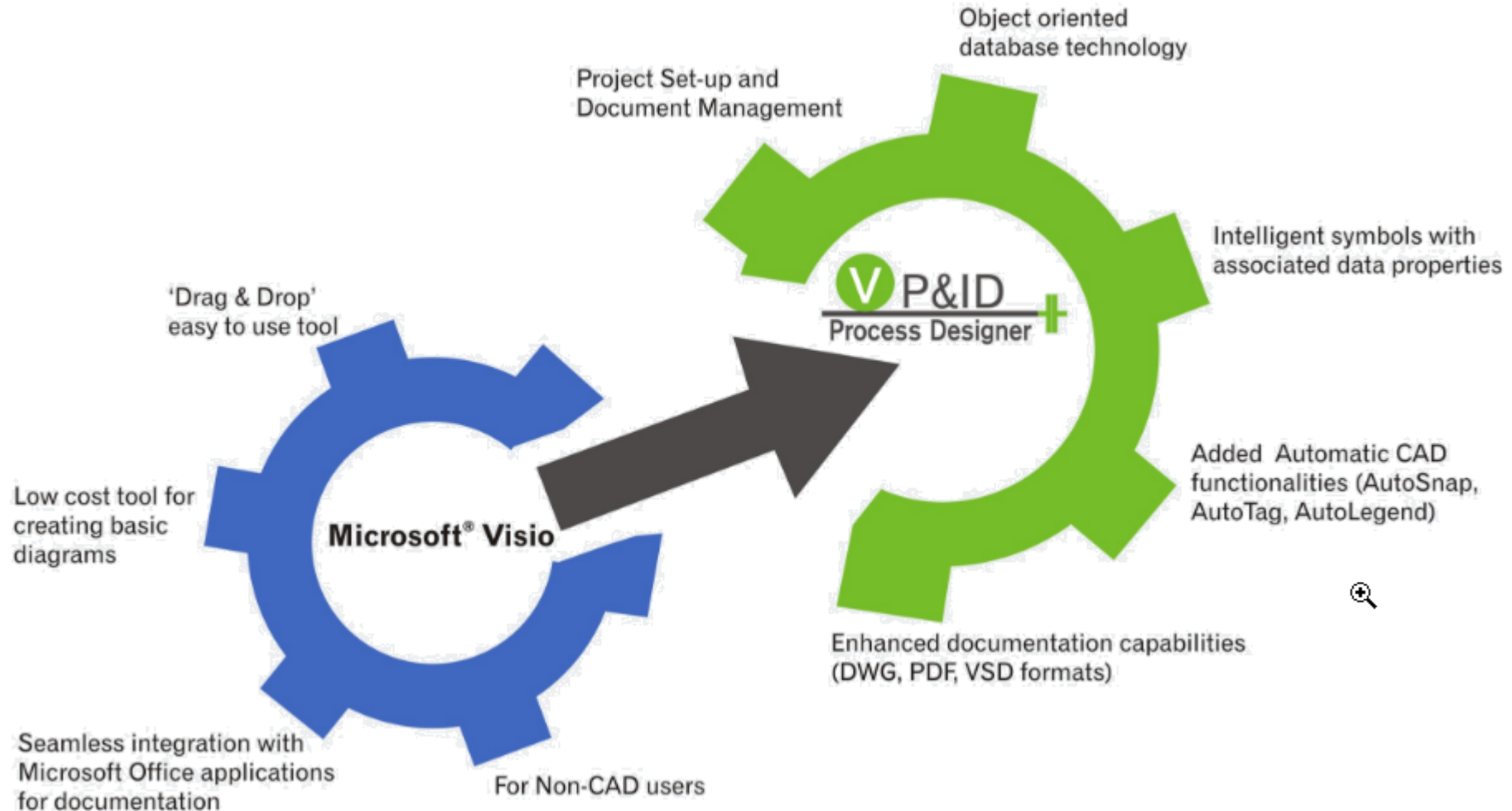
To know the system requirements for installation, click [here](#).

HS
03.003

M

About Visio P&ID Process Designer

- **VPID** is an add-on to Microsoft Visio Professional software that allows you to easily create Process Flow Diagrams (PFDs) and Piping & Instrumentation Diagrams (P&IDs) in the Microsoft® Visio environment.
- It uses a centralized database management system that handles all objects with intelligence.



The User Interface

VPID Ribbons

PID File

- Create drawings, navigate through drawings and projects.
- Check for overall consistency of the drawing
- Export drawings

PID Edit

- Access drawings and objects in a tree structure.
- Edit object properties, scale, rotate, merge and link various objects.
- Access pipe commands

PID Finalize

- Label the drawing objects
- Create construction sets to re-use assemblies.
- Insert legends automatically

Visio Professional

File Home Insert Review View Developer PID File PID Edit PID Finalize Sign in

New Next Open Title-Block Previous Export Change project Audit/Check Drawing Hide VP&ID Object Show All Object Consistency Check Stencil Settings Common Layer Settings Structure View Graphicview Project wizard

DEMOPID_0001 [Compatibility Mode]

Shapes

Search shapes

More Shapes

MaterialFlow [Metric]

3 Way Valve (PIP - Imperial)

4 Way Valve (PIP - Imperial)

Compressor (PIP - Imperial)

Flange (PIP - Imperial)

Heat Exchanger (PIP - Imperial)

Hose (PIP - Imperial)

MaterialFlow [Imperial]

Misc Piping Equipment (PIP - Imperial)

Drop Quick Shapes here

3-Way Valve_53 Diverter Valve_54

VP&ID Tree

All Document: [...]

- Ethanol Plant [...]
- Deliverables [Deliverables]
- P&I Diagram [...]-013
- P&IDs [P&IDs]
- Equipment list [Equipment list - ...]
- Ethanol_Prj0083 [...]
- Ethanol_Proj0084 [...]
- PFDs [PFDs]

Page-1 All +

Page 1 of 1 Width: 12.7 mm. Height: 3.175 mm. Angle: 0° English (United States) 37%

Stencils

VPID offers a wide range of standard intelligent objects that can be directly used in the project.

Drawing area

With drag and drop functionality you can easily place objects in the drawing to create PFDs and PIDs. Also provide continuity between complex drawings using Cross References.

VPID Tree

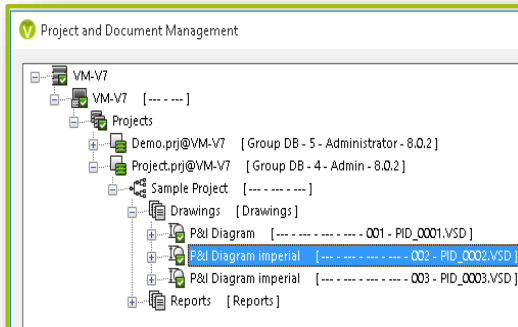
View, add and manage your project drawings and objects in one dialog. Filter with structure view to display a specific object type.



VPID Workflow Overview

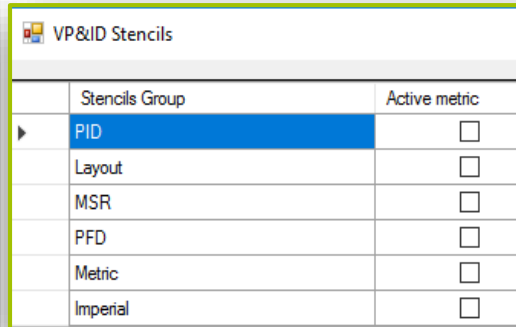
1

Creating a Project Structure



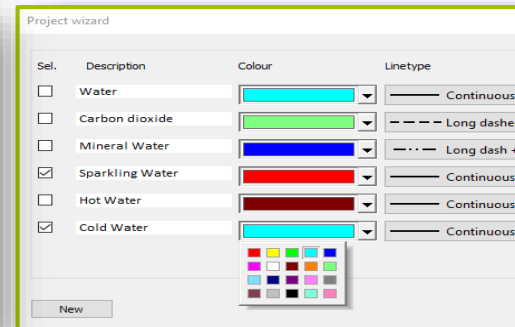
2

Setting up a Stencil group in the Drawing



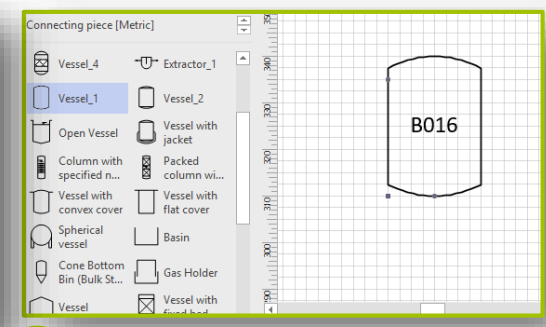
3

Adding Media to the Project



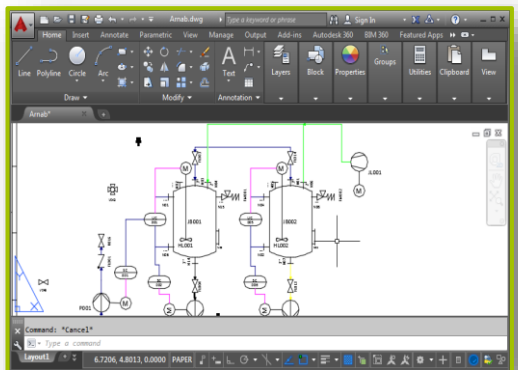
4

Placing Objects in the Drawing



8

Exporting Drawings



7

Generating Reports

it and factory
solution provider

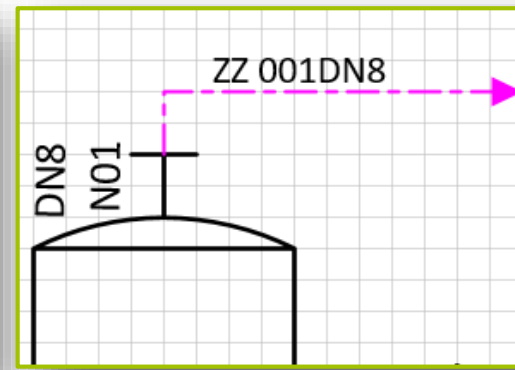
Pipeline list

Customer: Ethanol Proj
Project: AB-001

Tag no.	Description	Material	Media
P003	Pipeline for HW /	P235TR2	HW
P004	Pipeline for Effect Line /	P235TR2	Effect Line
P004	Pipeline for HW /	P235TR2	HW
P006	Pipeline for HW /	P235TR2	HW
P007	Pipeline for HW /	P235TR2	HW
P008	Pipeline for HW /	P235TR2	HW
P009	Pipeline for Effect Line /	P235TR2	Effect Line

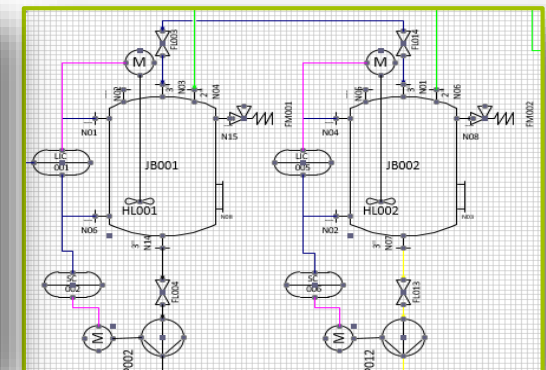
6

Assigning Object Designations



5

Connecting Objects with Pipes

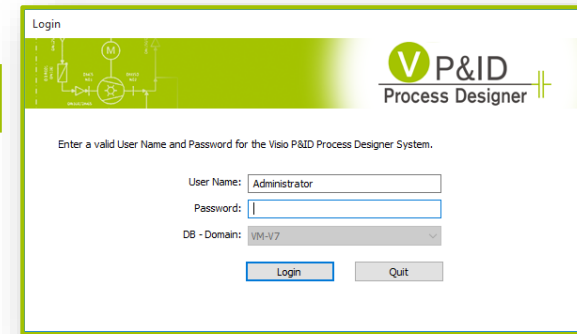


Creating a Project Structure

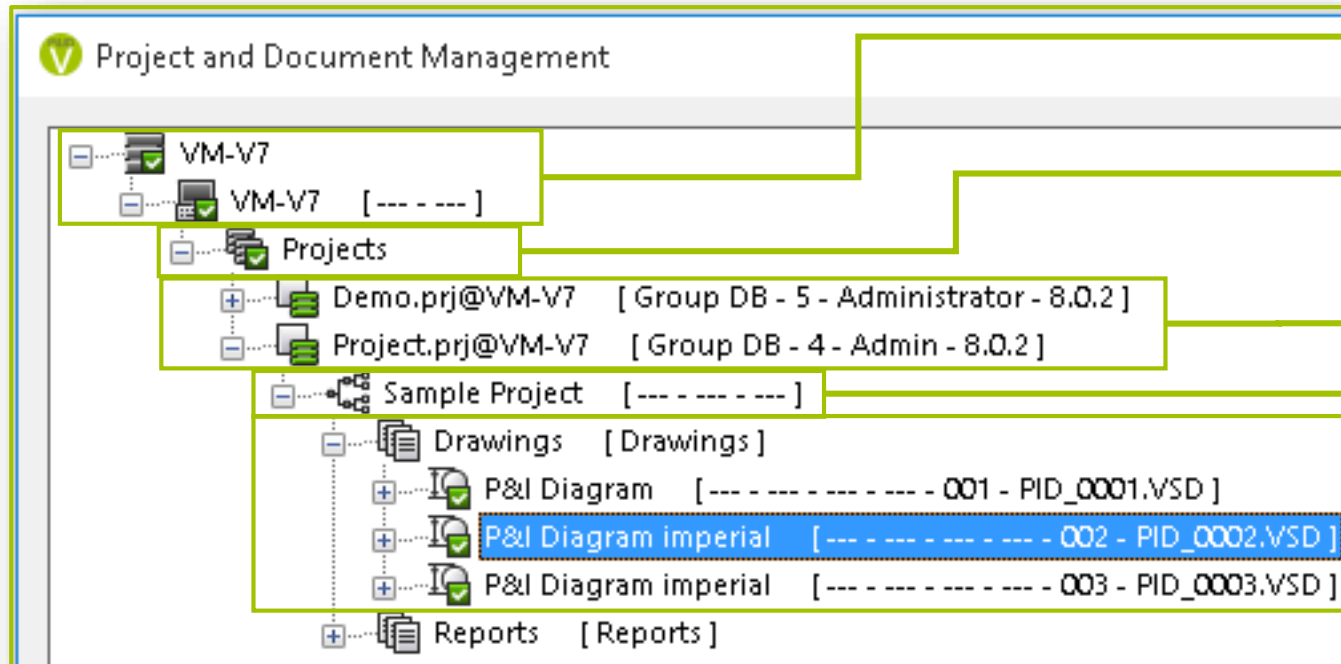
1 Launch **VPID**



2 Login with your credentials



3 Right-click a project structure node and using shortcut menu, create the project structure.



Database Domain and Computer: The name of the server on which the database is defined.

Database group: A container to store project database.

Project Database: A container of different projects. It is the topmost level of the project structure.

Project: A container of project document groups, objects, and documents.

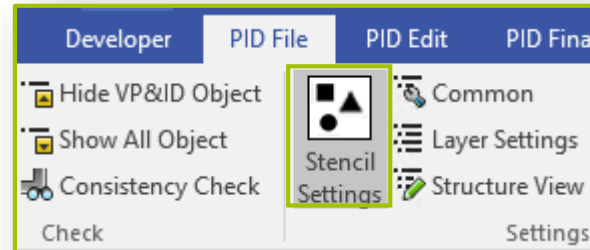
Document Group: A container for storing Drawings (PFDs and PID) and Reports in a Project.



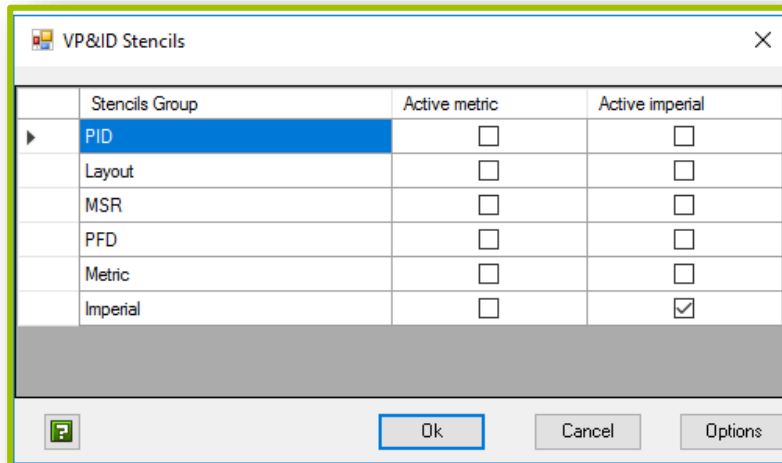
Setting a Stencil Group

You can edit a stencil group and create a new one based on project requirements.

1 Select **PID File** tab > **Stencil Settings**.



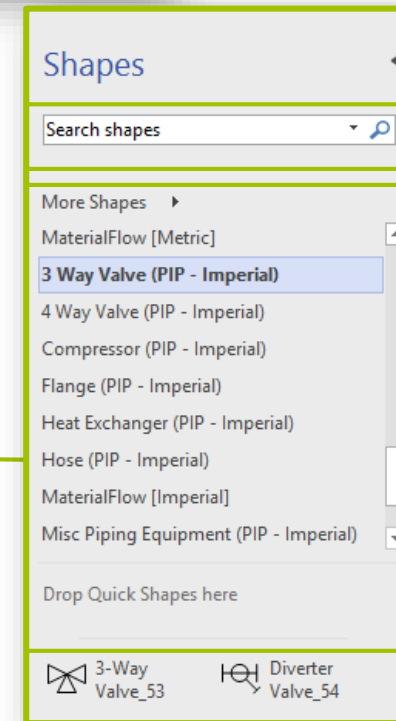
2 Select the required **Stencils Group**, click **OK**.



Stencils Group	Active metric	Active imperial
PID	<input type="checkbox"/>	<input type="checkbox"/>
Layout	<input type="checkbox"/>	<input type="checkbox"/>
MSR	<input type="checkbox"/>	<input type="checkbox"/>
PFD	<input type="checkbox"/>	<input type="checkbox"/>
Metric	<input type="checkbox"/>	<input type="checkbox"/>
Imperial	<input type="checkbox"/>	<input checked="" type="checkbox"/>

VPID provides some default stencil groups containing a range of stencils.

After selecting a stencil group, the stencils appear under the **Shapes** window.



Visio Quick Shapes

VPID intelligent objects.

HS
03.003

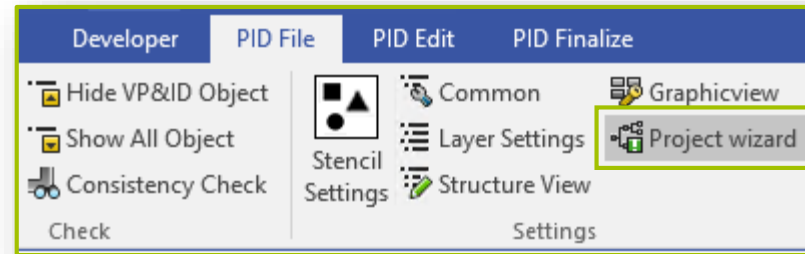
M

Adding Media

Project Wizard allows you to add multiple media objects. It automatically creates respective media specification object.

1

Select **PID File > Project Wizard**



3

Sel.	Description	Colour	Linetype	Linewidth
<input type="checkbox"/>	Water		Continuous	0 mm
<input type="checkbox"/>	Carbon dioxide		Long dashed	0.1 mm
<input type="checkbox"/>	Mineral Water		Long dash + 2 dots	0 mm
<input checked="" type="checkbox"/>	Sparkling Water		Continuous	1.0 mm
<input type="checkbox"/>	Hot Water		Continuous	0 mm
<input checked="" type="checkbox"/>	Cold Water		Continuous	0.5 mm

At the bottom of the dialog, there is a 'New' button, a 'Change' button, and a 'Cancel' button. A color selection palette is also visible below the table.

Fill in the specification for the media.

Click **New** to add a new media to the project.

2

4

Click **Change** to save the changes for existing media

Placing Objects in the Drawing

- 1 Drag an object from the stencils
- 2 Drop the selected objects into the drawing area

Containers and Vessels(ISA - Imperial)
Control gear/Switch [Imperial]

Drop Quick Shapes here

- Distillation Tower_59
- Jacketed Vessel_60
- Reactor_61
- Vessel_62**
- Atmospheric Tank_63
- Bin_64
- Floating Roof Tank_65
- Gas Holder_66
- Pressure Storage...
- Weigh Hopper_68

The drawing area shows a vessel symbol labeled **B016** and **N01** being placed on a grid.

- 3 Enter the object information and click **OK**.

Edit vessel

Data input vessel B016

Object Description (List) Vessel with cover [B]

Object Description **Vessel with cover**

Function text ---

Subplant ID ---

Code character **B** Counting number **016**

Media Hot Water

Pressure Design 1.2 bar Temperature design 150 °C

Manufacturer EMERSON Part Number ---

Type --- Material product contamination Carbon Steel

Nominal volume --- Length L ---

Outside diameter D --- Width B ---

Height H 99999999.0 mm

Item text short Vessel

Specification general ---

Drawingnumber PID --- Revision ---

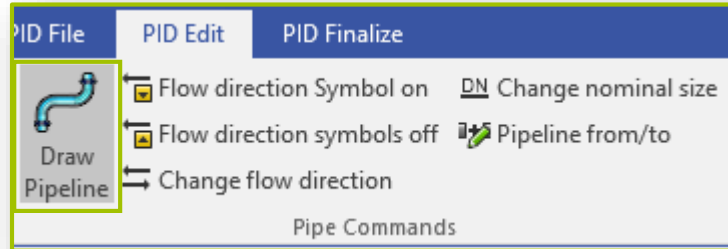
OK Cancel

Note: Ensure you have selected the COM Add-Ins available in the developer tab. Failing to do so may make objects static when placing them in the drawing.

Connecting Objects with Pipes

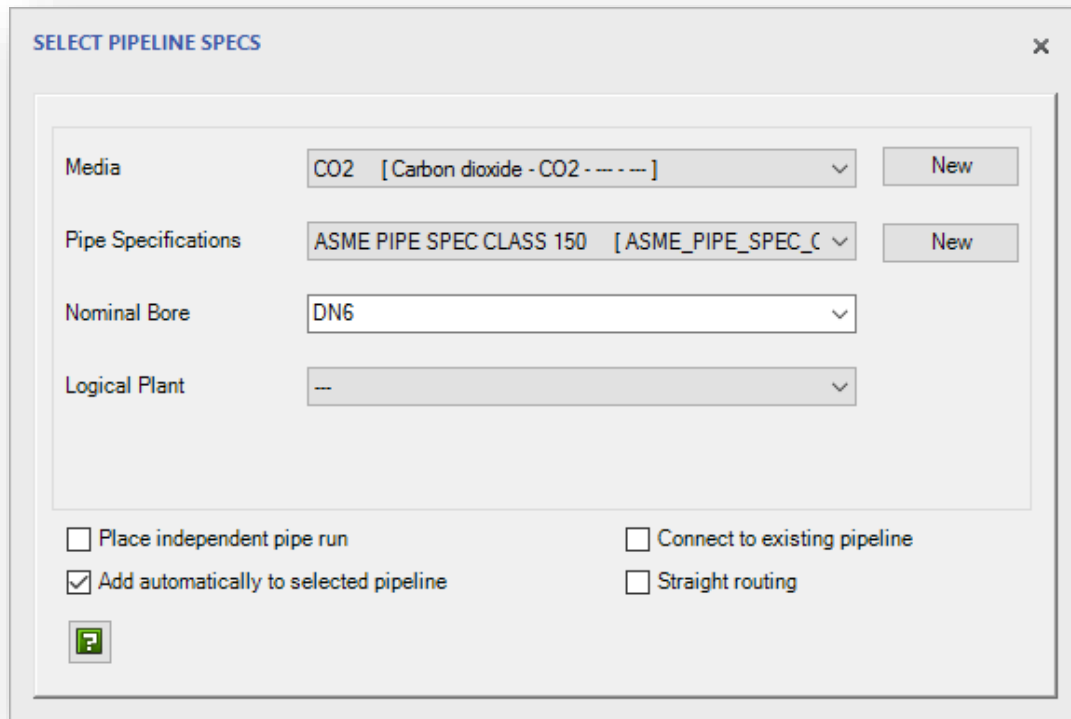
1

Select **PID Edit > Draw Pipeline.**



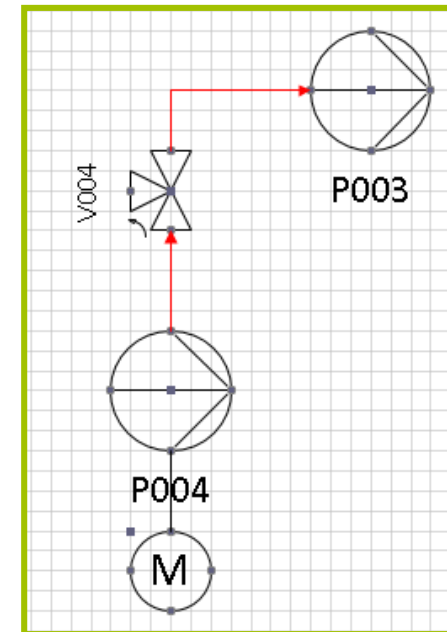
2

Select **Media, Pipe Specification, and Nominal Bore.**



3

Select a connection point, drag the mouse-pointer to the next connection point and drop it.

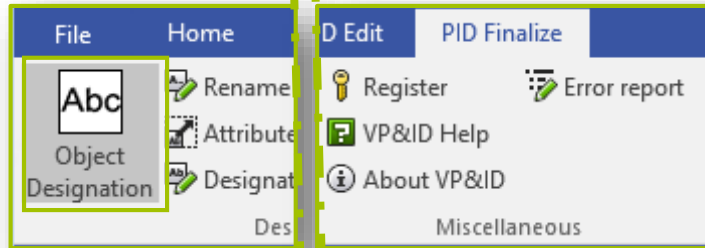


Designating Objects

The **Object Designation** command allows you to configure your object labelling. You can control the appearance and placement of the label as well.

1

Select **PID Finalize> Object Designation**.

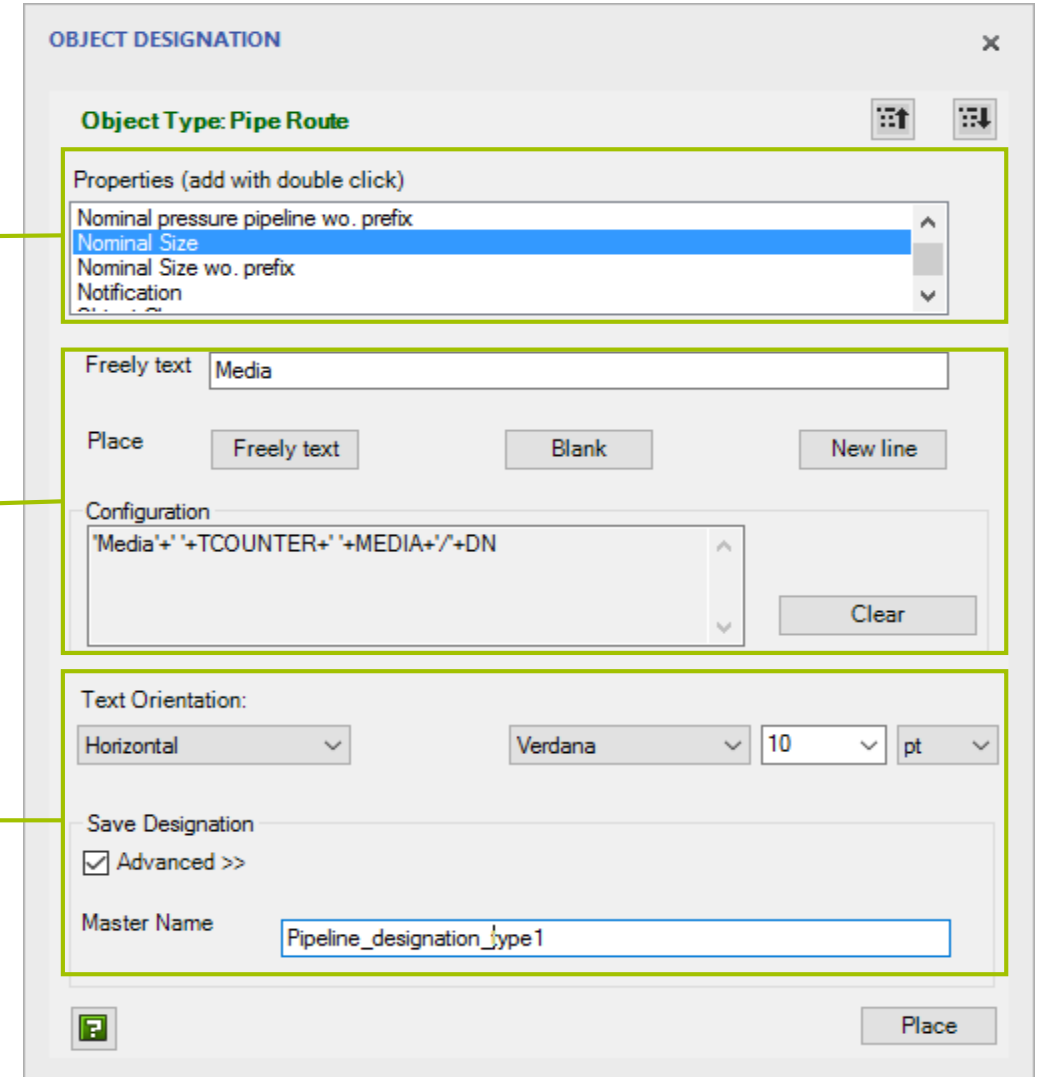


2

Double-click to select the object property which you want to display in the label

Configure the label with free text, blank spaces, new line etc.

Using advanced settings, you can save this label as a stencil for multiple usage. Drag and place the saved label stencil whenever you require.

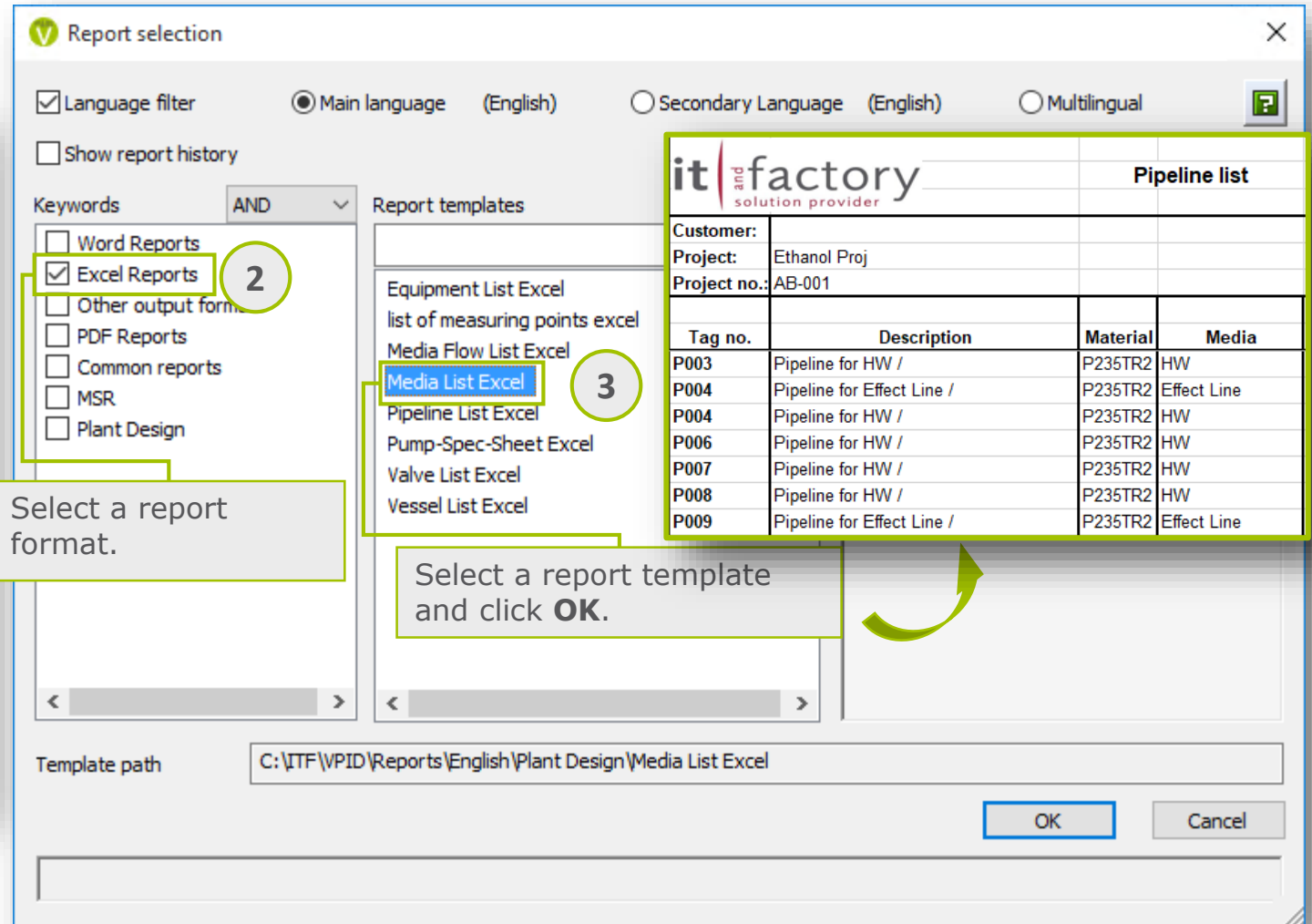
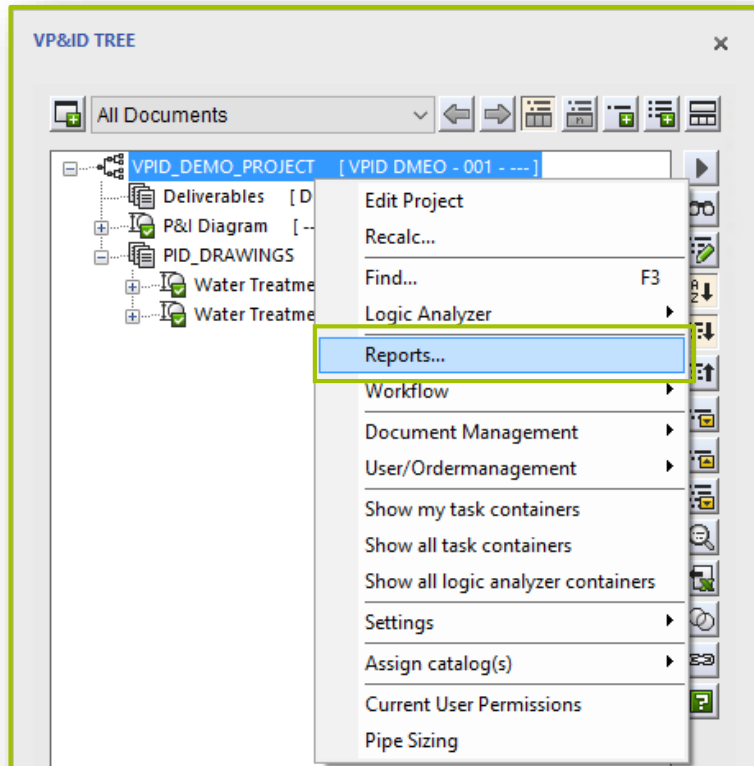


Generating Reports

You can generate reports consisting of material list and export it in various formats using the available templates.

1

In **VPID** Tree, right-click the Project node and select **Reports**.

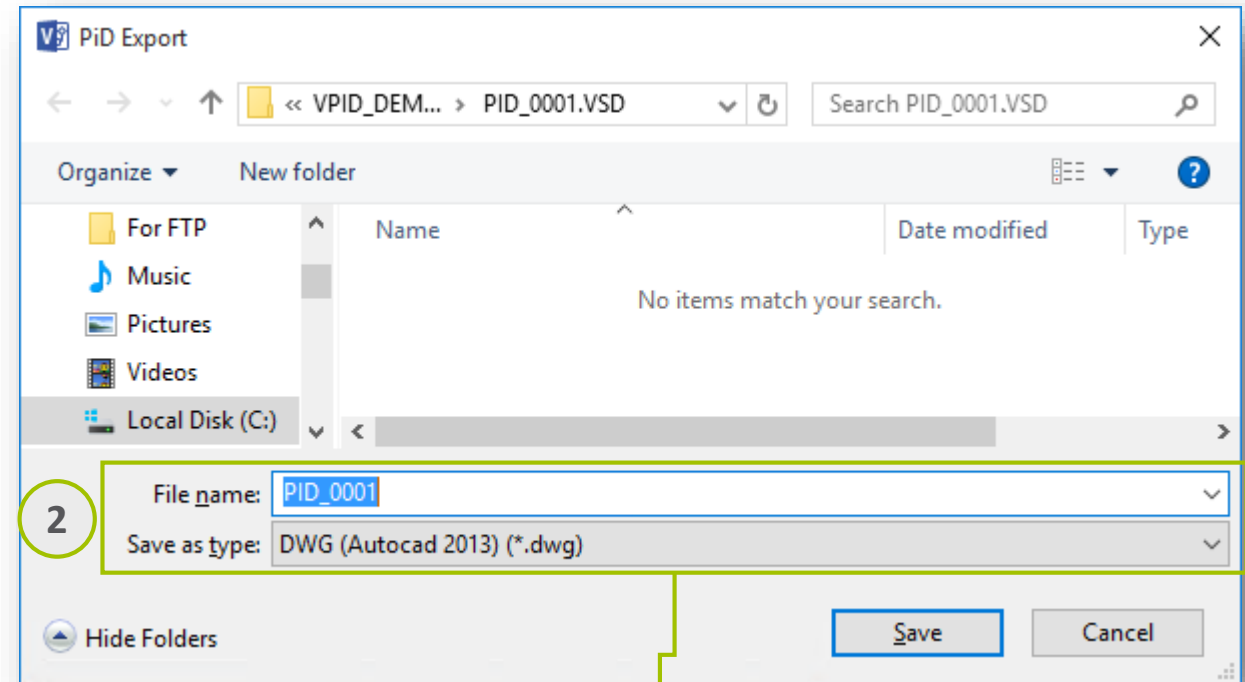
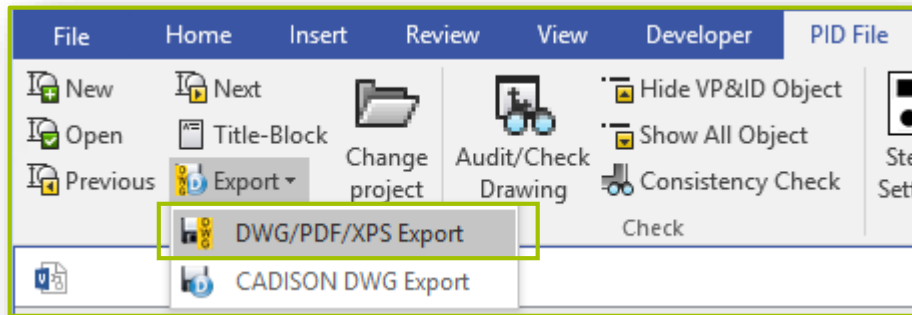


Exporting Drawings

VPID allows you to export your drawings in **DWG** and **PDF** format, which allows you to share your drawing.

1

Select **PID File > Export > DWG/PDF/XPS Export**.



Enter a **File name**, select a **Save** as Type and click **Save**.

Note: To export drawings as CADISON DWG, you will need to contact your **VPID** support.

Thank You!

We would like to hear from you!

You can mail us at info@visiopid.com and we will reach to you in one business day.

If you need any technical assistance, visit our support centre at <http://www.visiopid.com/ostic/open.php>.

HS
03.003

M